

Aluminum ISO-Mono Valves



"ISO-Mono" Valve Features

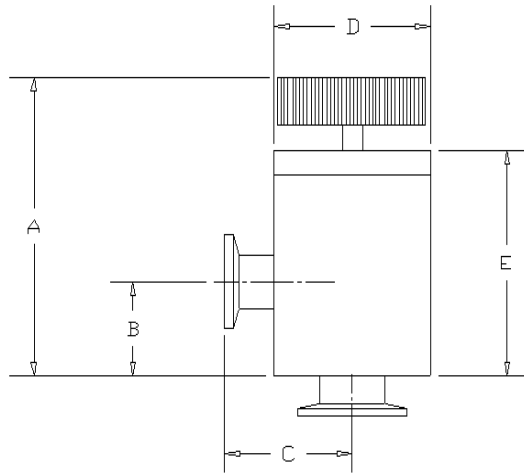
- **Compact, one piece, "Mono-Valve" design**
- **Reliable, low particulate, formed bellows assemblies**
- **Viton® sealed bonnet and poppets**
- **Manual and pneumatic operation**
- **Right angle and inline mounting configurations**

Features:

ISO-Mono valves feature valve bodies which are fabricated from a single piece of 6061t6 billet aluminum. This translates to a sleek efficient design, with extremely smooth flow paths. There are no seams, virtual leaks are eliminated, and valve bodies very easy to clean. **ISO-Mono** valve bodies are light, strong, and have a high fluorine resistance. Aluminum also has excellent thermal conductivity. Naturally this thermal conductivity is uniform, allows the body to reach a uniform temperature quickly, thereby minimizing cold spots, making **ISO-Mono** valves a great choice for CVD applications. Furthermore since the valve body is machined completely from one piece of material, flange interfaces are flat, straight, square, and abide by ISO mounting principles.

Key High Vacuum Products, Inc. pneumatic ISO-Mono valves are versatile and reliable shut-off valves. Our pneumatic versions are fail safe, single acting (spring loaded, normally closed), and will function in any position. ISO-Mono valves are provided, (inclusive) with a 120/60 Solenoid. All valve assemblies are leak tested on a helium mass spectrometer @ 3×10^{-9} torr (with a one atmosphere differential). ISO-Mono valves bodies are bakeable to 150° C. See ordering blocks for additional options, and soft goods maintenance kits.

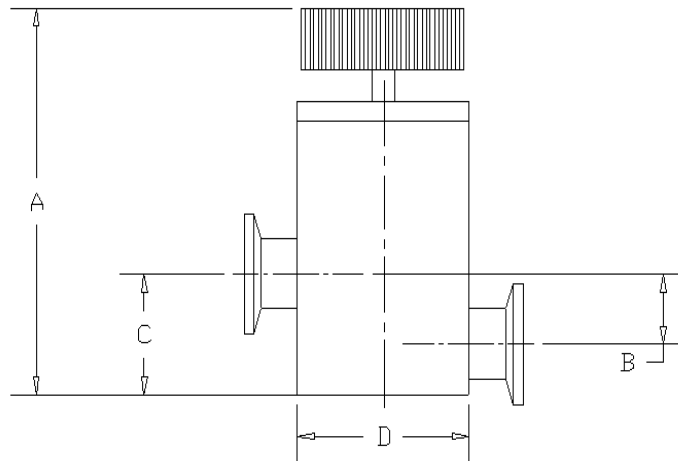
Aluminum ISO-Mono Valves



Manual Right Angle Valves

Part Number	Flange (port) Size	A	B	C	D	E	Price
KAHV-16★	NW 16	3.2	1.57	1.57	2.05	2.50	\$ 260.00
KAHV-25★	NW 25	3.37	1.97	1.97	2.05	2.45	\$ 260.00
KAHV-40★	NW 40	4.75	2.57	2.57	3.05	3.49	\$ 305.00
KAHV-50★	NW 50	5.00	2.80	2.80	3.89	4.36	\$ 440.00

★ = New Product



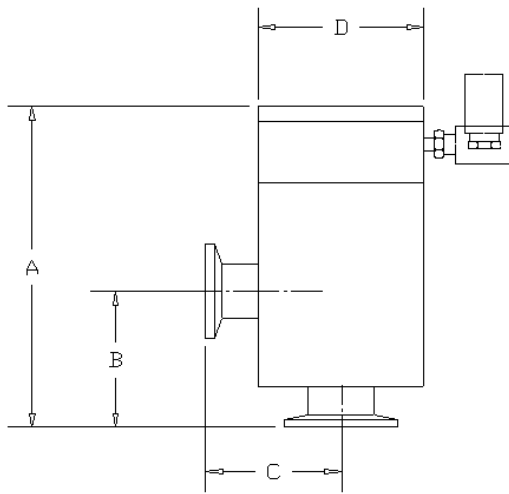
Manual Inline Valves

Part Number	Flange (port) Size	A	B	C	D	Price
KAIV-16★	NW 16	4.35	0.87	1.58	2.00	\$ 320.00
KAIV-25★	NW 25	4.50	1.25	1.98	2.00	\$ 320.00
KAIV-40★	NW 40	5.87	1.77	2.57	3.00	\$ 360.00

★ = New Product



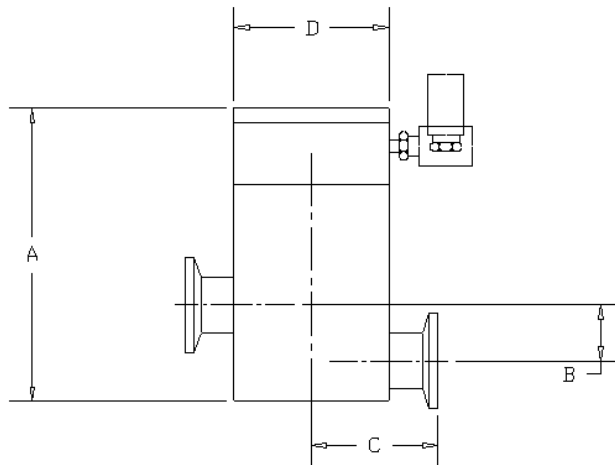
Aluminum ISO-Mono Valves



Pneumatic Right Angle Valves

Part Number	Flange (port) Size	A	B	C	D	Price
KAHV-16-P★	NW 16	4.58	1.57	1.57	2.00	\$ 290.00
KAHV-25-P★	NW 25	4.94	1.97	1.97	2.00	\$ 315.00
KAHV-40-P★	NW 40	6.04	2.57	2.57	3.00	\$ 360.00
KAHV-50-P★	NW 50	7.03	2.80	2.80	3.90	\$ 500.00

★ = New Product



Pneumatic Inline Valves

Part Number	Flange (port) Size	A	B	C	D	Price
KAIV-16-P★	NW 16	4.89	0.87	1.58	2.00	\$ 350.00
KAIV-25-P★	NW 25	5.26	1.25	1.98	2.00	\$ 385.00
KAIV-40-P★	NW 40	6.65	1.77	2.57	3.00	\$ 420.00

★ = New Product



Aluminum ISO-Mono Valves

Pneumatic valve options *(Add option code to suffix of part number)*

Description	Option Code		Price
24 Volt DC solenoid	-24VDC	Add	\$ 20.00
24 Volt AC solenoid	-24VAC	Add	\$ 20.00
220 Volt AC solenoid	-220VAC	Add	\$ 20.00
Mechanical Limit Switches	-LS	Add	\$ 300.00
No Solenoid	-NS	Deduct	\$ 10.00

"Soft Goods" (Viton®) manual valves

Part Number	Description	Price
OR-KAAV-16★	Fits NW 16	\$ 13.00
OR-KAAV-25★	Fits NW 25	\$ 13.00
OR-KAAV-40★	Fits NW 40	\$ 13.00
OR-KAAV-50★	Fits NW 50	\$ 18.00

"Soft Goods" (Viton®) pneumatic valves

Part Number	Description	Price
OR-KAAV-16-P★	Fits NW 16	\$ 13.00
OR-KAAV-25-P★	Fits NW 25	\$ 13.00
OR-KAAV-40-P★	Fits NW 40	\$ 13.00
OR-KAAV-50-P★	Fits NW 50	\$ 18.00



Replacement bellows assemblies

Part Number	Description	Price
AVB-16★	Fits NW 16	\$ 185.00
AVB-25★	Fits NW 25	\$ 185.00
AVB-40★	Fits NW 40	\$ 225.00
AVB 50★	Fits NW 50	\$ 289.00

Note: Key High Vacuum Products, Inc. routinely modifies our product line to fit individual requirements. Nickel plating, Kalrez® 4079, Chemrez® seals, etc. are all available upon request.

